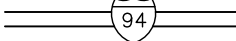
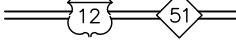

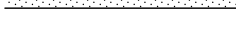

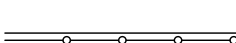

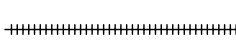

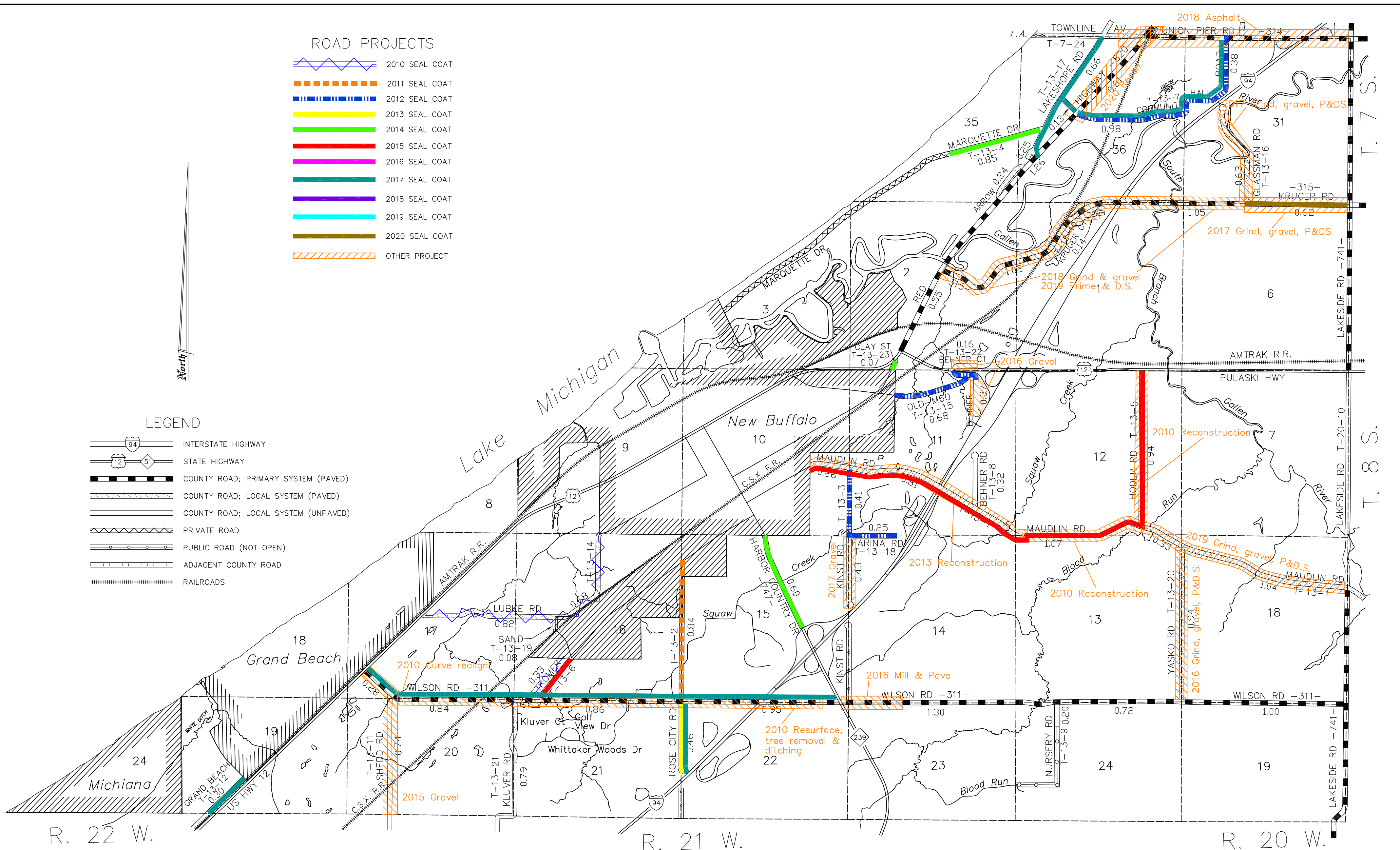


ROAD PROJECTS

-  2010 SEAL COAT
-  2011 SEAL COAT
-  2012 SEAL COAT
-  2013 SEAL COAT
-  2014 SEAL COAT
-  2015 SEAL COAT
-  2016 SEAL COAT
-  2017 SEAL COAT
-  2018 SEAL COAT
-  2019 SEAL COAT
-  2020 SEAL COAT
-  OTHER PROJECT

LEGEND

-  INTERSTATE HIGHWAY
-  STATE HIGHWAY
-  COUNTY ROAD; PRIMARY SYSTEM (PAVED)
-  COUNTY ROAD; LOCAL SYSTEM (PAVED)
-  COUNTY ROAD; LOCAL SYSTEM (UNPAVED)
-  PRIVATE ROAD
-  PUBLIC ROAD (NOT OPEN)
-  ADJACENT COUNTY ROAD
-  RAILROADS



NEW BUFFALO TWP.

BERRIEN COUNTY
 ROAD DEPARTMENT
 BENTON HARBOR, MICHIGAN
 KEVIN STACK, COUNTY HWY ENGINEER
 SCALE: 1"=2000' DATE: October, 2020
 No. 13

PRIMARY ROAD SYSTEM IS 11.66 MILES
 LOCAL ROAD SYSTEM IS 17.58 MILES